

Software License Key

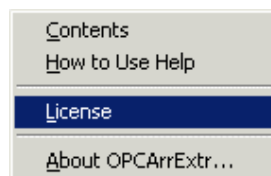
Some of software developed by Klinkmann supports the **software licensing** possibility. The further explanation gives the basics how to get and use the **Software License Key**.

The Klinkmann software licensing is “computer dependent” and can be easily implemented.

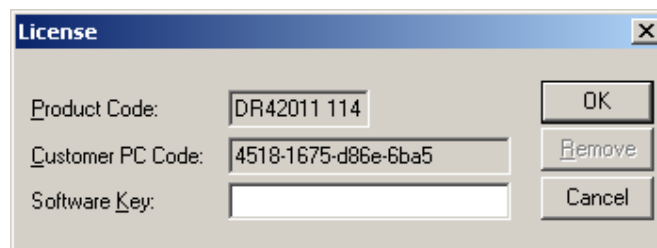
Installing the Software License Key

The following steps are required to install the Software License Key:

- 1) Download the Klinkmann software installation (self-extracting executable) from Klinkmann communication software downloads page (<http://www.klinkmann.com/automation/klinkmann-software-products/communication-software-products-prices/>) or from Klinkmann wireless automation software downloads page (<http://www.klinkmann.com/automation/klinkmann-software-products/wireless-software/wireless-download/>). Before the downloading do not forget to check if this software supports the software licensing feature – marked by **(S)** in “Order No.” column or explained directly on downloads page.
- 2) Install the downloaded software. During the installation, **do not select** the “HASP Driver” in “Select Components” dialog.
- 3) Start the installed software runtime executable (in further explanation the Klinkmann “FestoIPC OPC & DDE Server” is used as an example). Click on "Help" menu item (also short-cut Alt+H can be used) and pop-up menu with "Help" menu commands will appear:

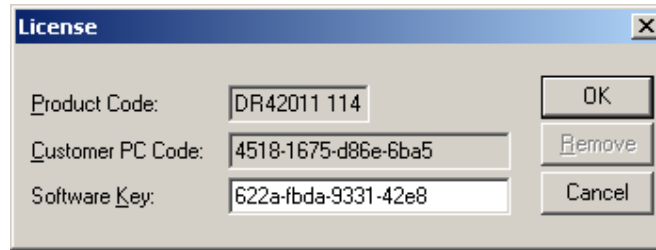


Select “License...” and “License” dialog will appear:



- 4) Here the “Product Code” is this software product code and version and “Customer PC Code” is “computer-dependent” string generated by installed software runtime executable and it is unique for this computer. Write down both the “Product Code” and “Customer PC Code” or Copy/Paste to e-mail when ordering the software product;

- 5) After purchasing the software, you will get the software license key - 16-character alphanumeric string. Open the "License" dialog again and Copy/Paste it to "Software Key" field:



- 6) Click OK, software license now is enabled. Restart the software runtime executable.

The "Software Key" string is saved to WIN.INI file to enable it is automatically detected at software runtime executable next start-up.

Removing the Software License Key

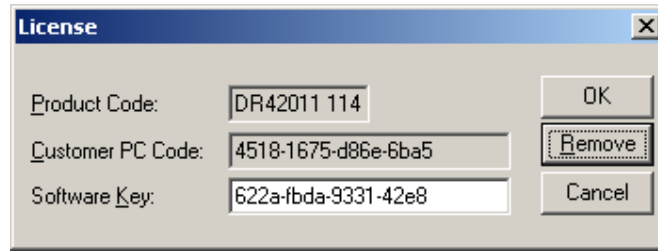
The removing of Software License Key might be needed in rare situations when it is necessary to move Klinkmann software to other computer (or operation system change is planned for same computer).

The following steps are required to remove the Software License Key:

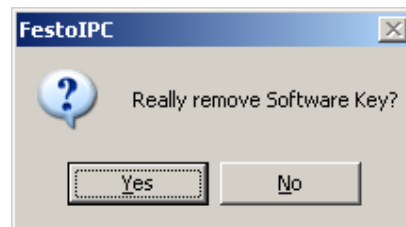
- 1) Start the installed software runtime executable (in further explanation the Klinkmann "FestoIPC OPC & DDE Server" is used as an example) and enable (if not yet enabled) the internal or Wonderware Logger by selecting the "ShowLogger" option on software System Menu (the menu that appears when you click on the Server icon in the upper left hand corner of the Server's window):



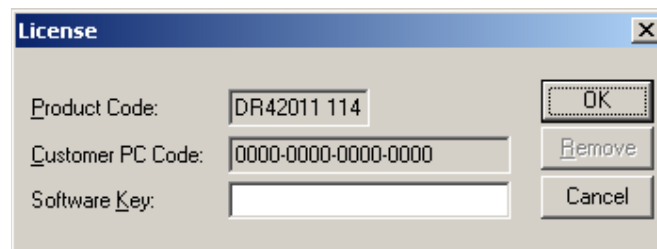
- 2) Select Help/License from main menu and click the “Remove” button on “License” dialog:



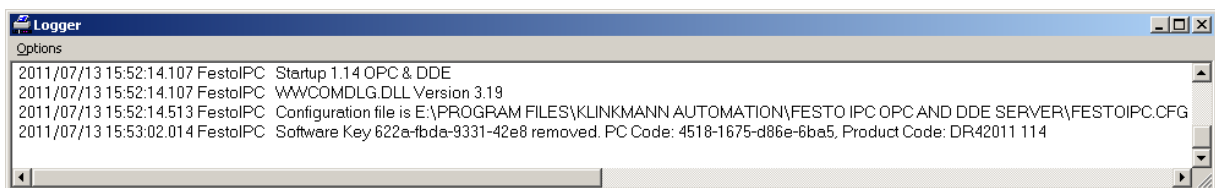
- 3) Confirm the removing of Software License Key by clicking on Yes button:



The “License” dialog now will contain the empty “Customer PC Code” and “Software Key” fields:



- 4) Take the screenshot from internal or Wonderware Logger window containing the “Software License Key removal message”, like below:



or take the string with “Software License Key removal message” directly from internal log file or from Wonderware Logger, like following:

2011/07/13 15:53:02.014 FestoIPC Software Key 622a-fbda-9331-42e8 removed. PC Code: 4518-1675-d86e-6ba5, Product Code: DR42011 114

- 5) Provide the obtained “Software License Key removal message” screenshot or string together with new “Customer PC Code” when applying for new Software License Key without purchasing the new license (in situations when it is necessary



to move Klinkmann software to other computer or operation system change is planned).

Note!

Without providing the “Software License Key removal message” screenshot or string, the new Software License Key will not be assigned.

Software License Key for Klinkmann Omron Ethernet Direct DAServer (DASOmronEth)

Enabling software licensing for Klinkmann Omron Ethernet Direct DAServer (DASOmronEth) differs from usual sequence used for other Klinkmann software – it is caused by reason the DASOmronEth configuration is done via Wonderware SMC.

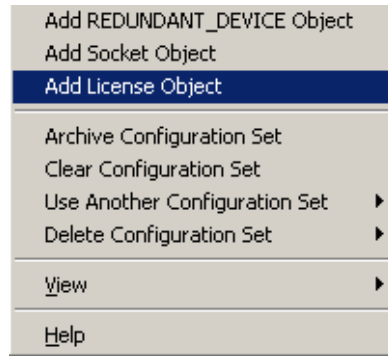
The following steps are required to enable the software licensing for DASOmronEth:

- 1) Download the Klinkmann DASOmronEth installation from Klinkmann communication software downloads page <http://www.klinkmann.com/CD/servers.html> .
- 2) Install the Klinkmann DASOmronEth.
- 3) After installation Klinkmann DASOmronEth is added to list of installed DAServers in SMC DAServer Manager:

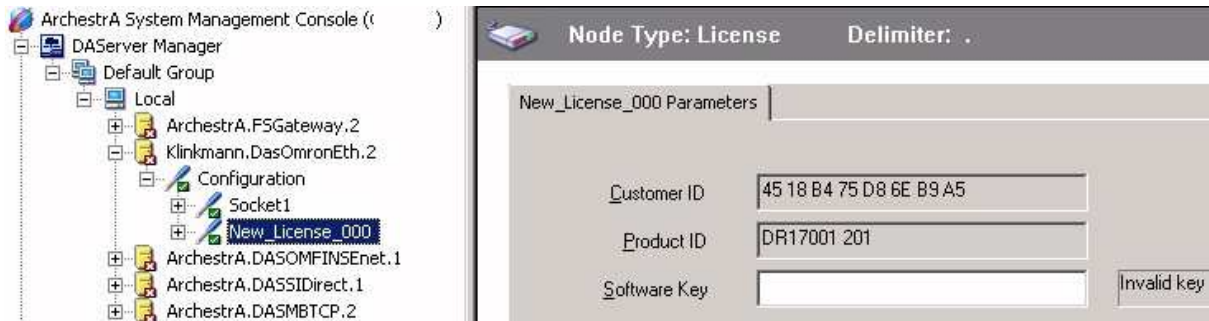


Now Klinkmann DASOmronEth can be configured by adding Socket and Controller Objects.

4) Select “Add License Object” from DASOmronEth “Configuration” pop-up:

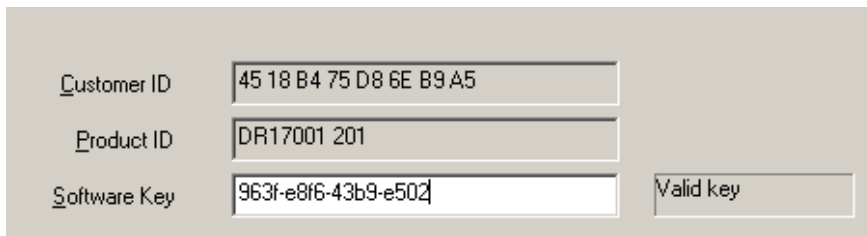


The “New License Object Parameters” tab will appear:



Here the “Customer ID” is “computer-dependent” string generated by DASOmronEth and “Product ID” is DASOmronEth product code and version. Write down both the “Customer ID” and “Product ID” or Copy/Paste to e-mail when ordering the DASOmronEth.

5) After purchasing the DASOmronEth, you will get the software license key – 16-character alphanumeric string. Open the “New License Object Parameters” tab again and Copy/Paste it to “Software Key” field:



The key validity indicator should change to “Valid key”, indicating the software license now is enabled.