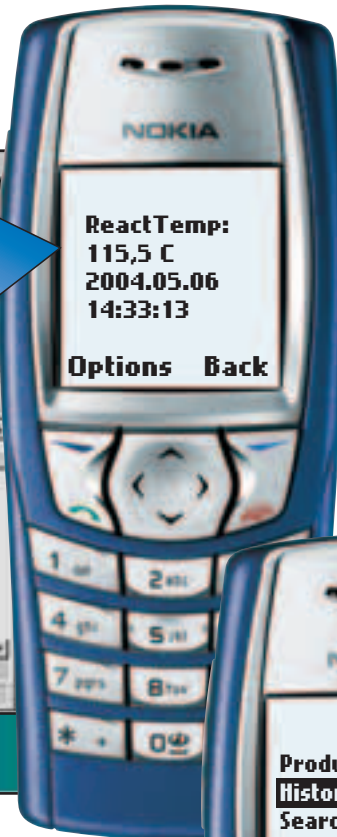
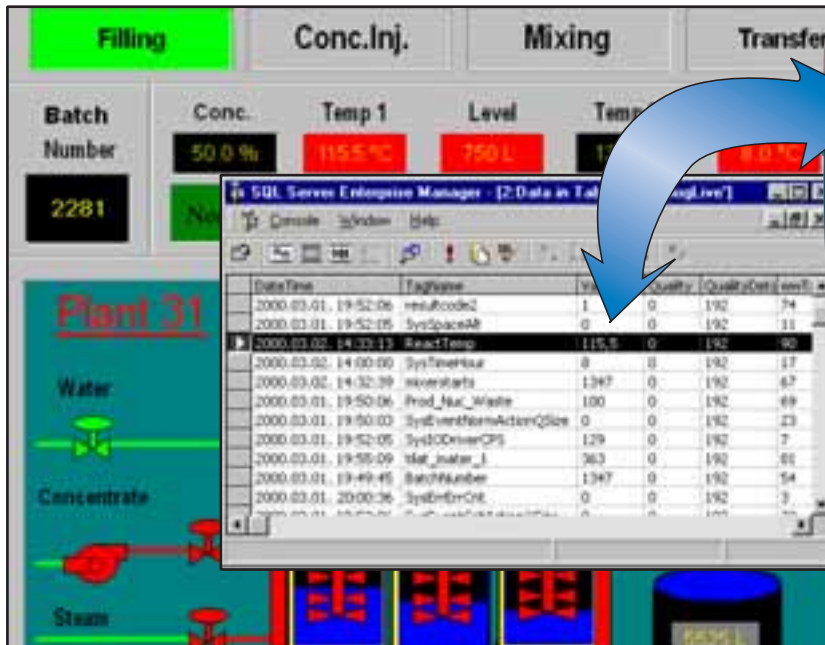


## Klinkmann WAP Tool

### Mobile Internet interface



Mobile Internet is revolutionizing fast the ways automation and reporting are done in production, customer service and many other areas. WAP, the Wireless Application Protocol, is an open, global specification that empowers mobile users with wireless devices to easily access and interact with information and services.

Klinkmann Automation (Helsinki, Finland) has developed for over five years automation solutions and communication software based on mobile phone network. Using this expertise Klinkmann has created the first package solution for automation and reporting based on mobile Internet, Klinkmann **WAP Tool**.

As freely configurable software tool, Klinkmann WAP Tool allows user to configure for WAP phone use the free format inquiries and settings from/to standard Microsoft SQL Server and Wonderware Industrial SQL Server. WAP phones operate in the system as mobile Internet terminals.

The interface to Microsoft SQL Server allows to retrieve summary data permanently stored in standard relational database tables. Klinkmann WAP Tool manages the creation and processing of SQL queries, enabling the availability of Microsoft SQL Server database data by using WAP phones and other WAP terminals.

For time critical and f.ex. automation applications including larger amounts of data Klinkmann WAP Tool interfaces with Wonderware Industrial SQL Server making direct fast communication with automation devices including PLCs and various automation systems/networks possible. Klinkmann's wide communication server library offers many solutions for these devices and network interfaces.

Klinkmann WAP Tool is developed to support the access to SQL data taking into consideration the characteristics of narrowband devices and other limitations of WML (Wireless Mark-up Language) and WML Script used to make SQL data available in wireless environment.

Klinkmann WAP Tool makes real mobile internet applications affordable in customer applications without expensive tailoring and consulting - the system configuring is easy enough for any person familiar with standard SQL Server tools.

## What is WAP?

WAP, Wireless Application Protocol, is a world wide standard which allows Internet based services to be accessed on mobile terminals like mobile WAP phones. Besides allowing the user to browse the Internet, the WAP terminal allows one to browse Intranet and Extranet services and to send/receive emails.

Basically WAP offers all the standard Internet services but in a flexible and mobile wireless environment.

